

IBIS GOLF AND COUNTRY CLUB PLAT NO. 26

A PLANNED UNIT DEVELOPMENT
 BEING A REPLAT OF A PORTION OF TRACT "A", IBIS GOLF AND COUNTRY CLUB
 PLAT NO. 7, AS RECORDED IN PLAT BOOK 87, PAGES 152 THROUGH 168 AND BEING A REPLAT OF A PORTION OF
 TRACT "A", IBIS GOLF AND COUNTRY CLUB PLAT NO. 14, AS RECORDED IN PLAT BOOK 75, PAGES 107 THROUGH 117
 LYING IN SECTION 25, TOWNSHIP 42 SOUTH, RANGE 41 EAST,
 CITY OF WEST PALM BEACH, PALM BEACH COUNTY, FLORIDA

TABULAR DATA

TOTAL AREA OF THIS PLAT	22.917 ACRES
AREA OF RESIDENTIAL	18.814 ACRES
AREA OF PRIVATE ROADWAY	3.975 ACRES
AREA OF OPEN SPACE (TRACT L)	0.128 ACRES
TOTAL NUMBER OF SINGLE FAMILY UNITS THIS PLAT	65
DENSITY THIS PLAT	2.84 UNITS/ACRE

132

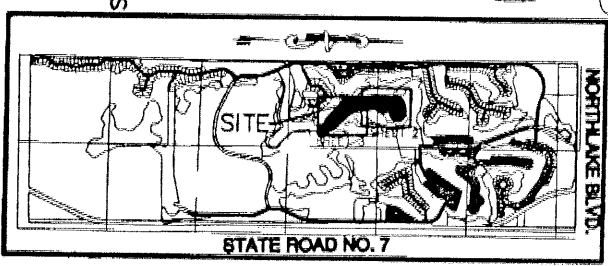
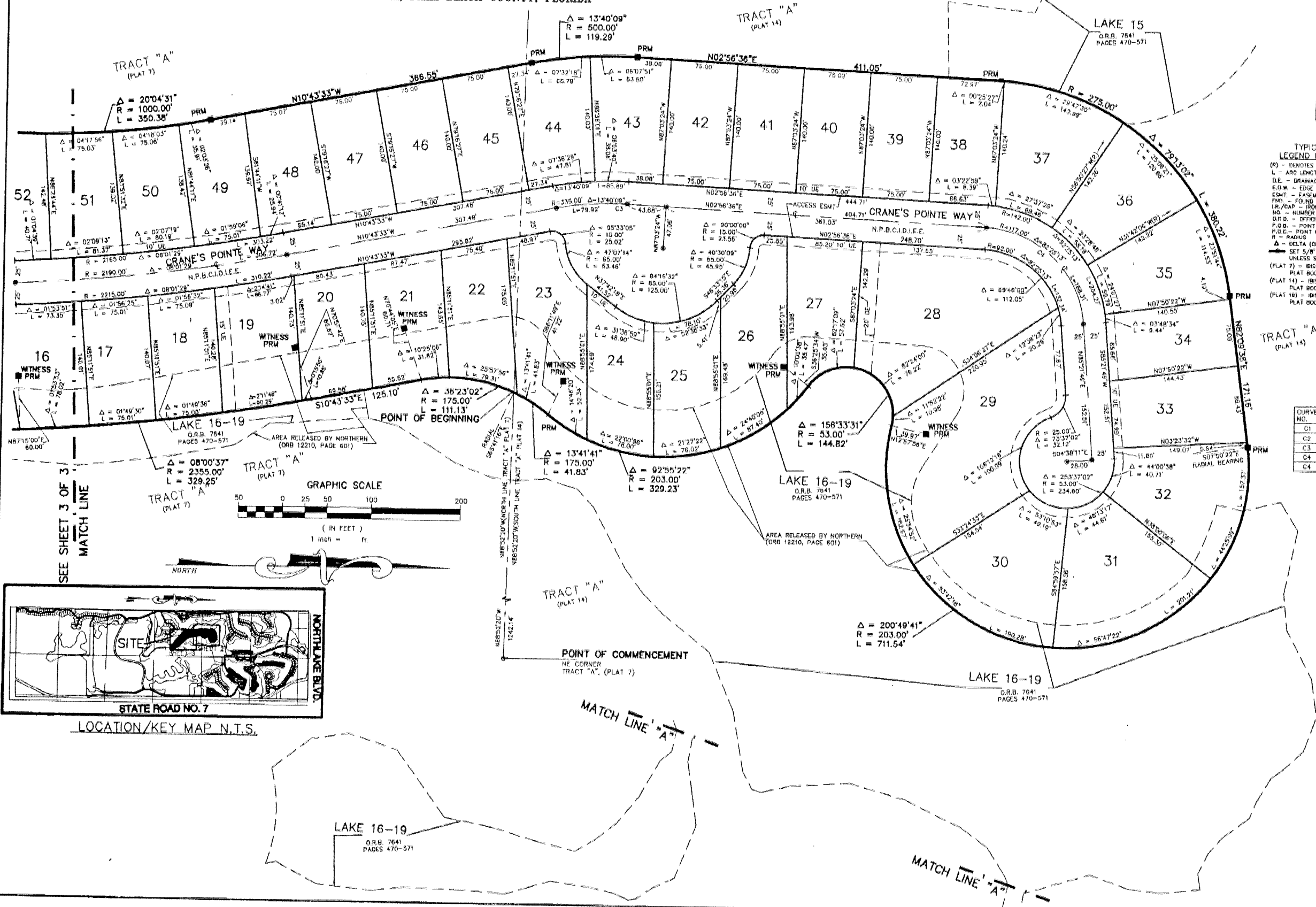
STATE OF FLORIDA
 COUNTY OF PALM BEACH
 THIS PLAT WAS FILED FOR
 RECORD AT _____ M.
 THIS _____ DAY OF _____
 A.D. 2001 AND DULY RECORDED
 IN PLAT BOOK _____ ON
 PAGES _____ AND _____
 DOROTHY H. WILKEN
 CLERK CIRCUIT COURT

By: _____
 DEPUTY CLERK

SHEET 2 OF 3

TYPICAL LEGEND NOTES
 (R) - RADIAL LINE
 L - ARC LENGTH
 D.E. - DRAINAGE EASEMENT
 E.O.W. - EDGE OF WATER
 E.M.T. - EASEMENT
 F.N.D. - FOUND
 I.R./CAP - IRON ROD & CAP
 NO. - NUMBER
 O.R.B. - OFFICIAL RECORD BOOK
 P.O.B. - POINT OF BEGINNING
 P.O.C. - POINT OF COMMENCEMENT
 R - RADIUS
 Δ - DELTA (CENTRAL ANGLE)
 SET 5/8" IR/CAP LB 3591
 UNLESS STATES OTHERWISE
 (PLAT 7) - IBIS GOLF AND COUNTRY CLUB PLAT NO. 7
 PLAT BOOK 87, PAGES 152 THROUGH 168
 (PLAT 14) - IBIS GOLF AND COUNTRY CLUB PLAT NO. 14
 PLAT BOOK 75, PAGES 107 THROUGH 117
 (PLAT 19) - IBIS GOLF AND COUNTRY CLUB PLAT NO. 19
 PLAT BOOK 81, PAGES 3 THROUGH 5

CURVE NO.	CHORD BEARING	CHORD DISTANCE
C1	N28°01'56"W	289.32'
C2	N30°39'09"W	505.37'
C3	N03°53'29"W	79.73'
C4	N44°09'13"E	154.16'
C4	N09°05'13"W	94.54'



LOCATION/KEY MAP N.T.S.